

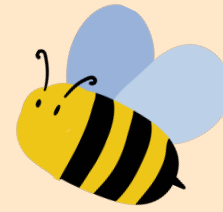
VOTE AMBER [1]



FOR VP COMMUNITY



YOUR VOICE MATTERS



AFFORDABLE STUDENT LIVING

ENSURING STUDENTS DO NOT FEEL THE HARSH IMPACTS OF THE COST OF LIVING DURING THEIR TIME AT UNIVERSITY

- **FOOD OPTIONS** - Union venues should set price caps on food and offer weekly deals to keep meals affordable
- **PRICE EQUALITY** - Union venues should ensure equal prices for purchases on both Stag Hill and Manor Park
- **HOUSING SUPPORT** - Advocate for stronger housing support to help students secure affordable accommodation when struggling

STRENGTHENING OUR COMMUNITY

AFFORDABLE EVENTS AND ENTERTAINMENT, ENSURING CHEAPER, MORE ACCESSIBLE SOCIAL EVENTS AT RUBIX AND ACROSS CAMPUS, WITH MORE FREE ACTIVITIES

- **GET INVOLVED** - Participate in regular feedback and continuous communication
- **COMMUNITY VOICE** - Regular student polling for future events including RUBIX and more student involvement
- **COMMUNITY VOLUNTEERING** - Connect students with volunteering opportunities that benefit both students and the wider Guildford community

INCREASING SAFETY ON CAMPUS

IMPLEMENTING MORE MEASURES ACROSS CAMPUS TO ENSURE STUDENTS FEEL SAFER BOTH DURING THEIR STUDIES AND LIVING ON CAMPUS

- **CCTV INITIATIVE** - Expand CCTV coverage in key locations to deter crime both on campus and in the wider community
- **24/7 SAFE SANCTUARIES** - Setup dedicated safe spaces where students can go if they feel unsafe or require immediate help
- **ADDRESS HAZARDS** - Work with the University to repair cracked pavements, uneven walkways and poorly maintained paths



amber.dob

Hi! I'm Amber, a third-year Criminology student. I am currently writing my dissertation about how we can take inspiration from other countries and communities to improve our own. I am committed to making your university experience the best it can be by strengthening our community one step at a time.

**STUDENT SPACES
STUDENT PRICES
STUDENT VOICES**

**VOTE
NOW**

TEAM SURREY

SurreyDecides

Vote at surreyunion.org.uk
25 February - 1 March 19:00