

Southern Unions Conference



SURREY
STUDENTS'
UNION

Programme

Contents

1. Welcome
2. Campus Map - Route to the Union Building
3. Union Building Map
6. Campus Map - Key Campus Locations
7. Agenda - Day 1
8. Agenda - Day 2
11. Agenda - Day 3
12. Communities of Practice



Meet **Steve the Stag**,
our Union mascot.
Hopefully you'll get to meet
him at the conference!



Need help or assistance?

We have a phone number
which you can call or WhatsApp
from 08:00 - 20:00 if you need
anything from us.

**07854
230 576**

Welcome!

Welcome to the University of Surrey and Surrey Students' Union! We are delighted to host the Southern Unions Conference once again, a tradition that began with the inaugural event in February 2019.

This year, over 20 Students' Unions are joining us, collectively representing more than 375,000 students from across the South of England. This conference offers a unique opportunity to connect with staff and officers from various unions, sharing insights, successes, and challenges. It is also an excellent introduction for new staff and officers to the vibrant students' union movement.

Our movement is unique—we all strive to solve similar problems and develop innovative ways to support our students, yet we are not in competition with each other. This makes our gatherings even more special, as we can share best practices and collaboratively address the issues of the day.

Our programme is packed with engaging sessions across four themes, ensuring there is something of interest for everyone. In addition to the formal agenda, we have planned social events on both evenings, providing opportunities to relax and have fun.

We hope you will enjoy your time at the conference, at the University of Surrey and in Guildford!



Liam White
Union President 2024/25



Alex McKee
Chief Executive Officer

Southern Unions Conference



Supported by:



Connecting you to students.



Bringing your brand and image to life.

Campus Map

Route to the Union Building



Scan This QR Code for the full Campus Map.



Park Here!

Walk this way

Union Building

Walking route to Manor Park, Surrey Sports Park and Surrey Research Park



Union Building



Your Conference Venues

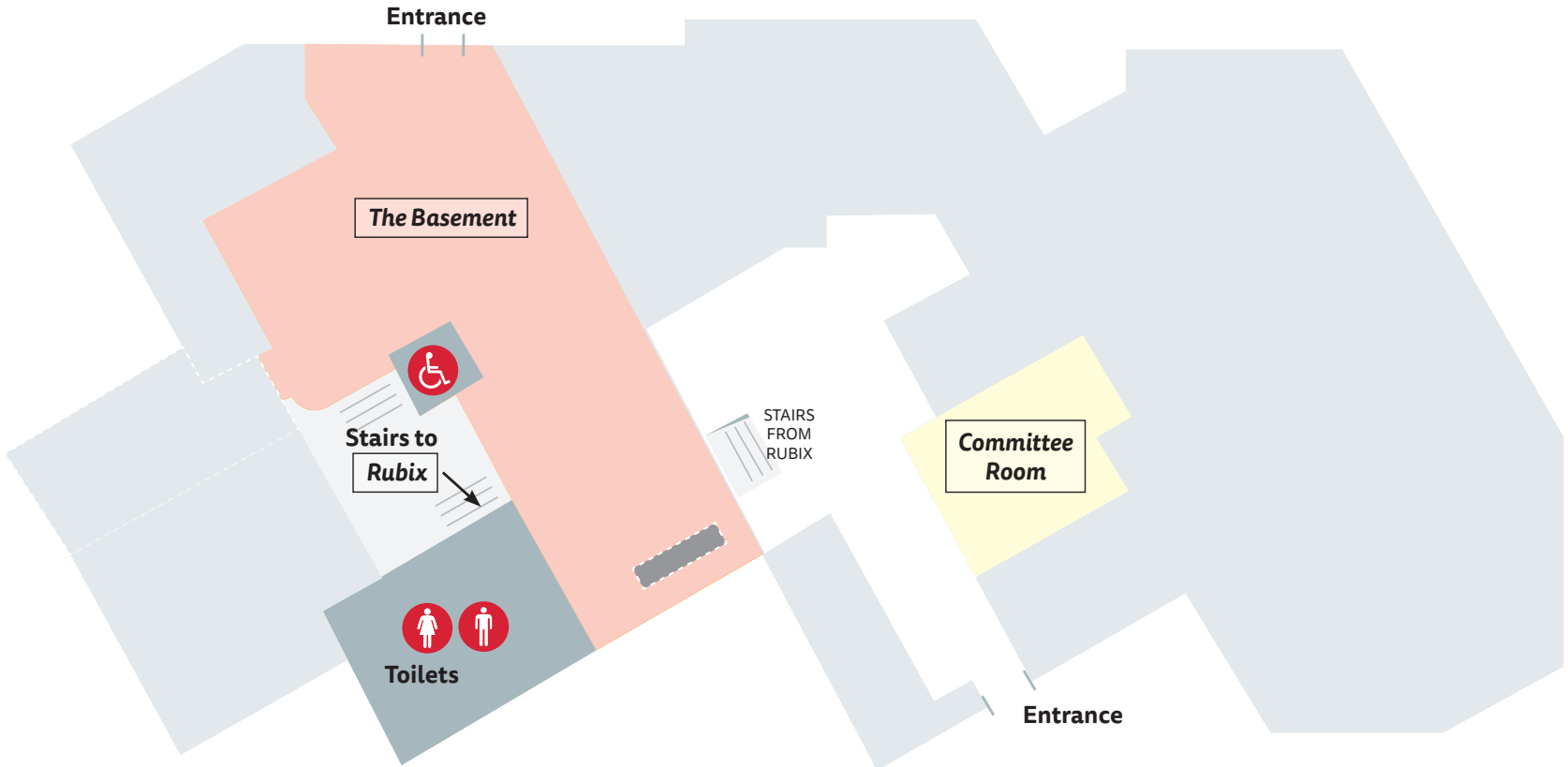
Rubix - our main nightclub venue, during the day this will be our main conference space. In the evening this will be where you have your dinner and our evening entertainment.
The Basement - our smaller venue, this is setup as our second conference space.
The Front Room - our space for Club and Society events and socials, this will be another conference space as well as our non-alcoholic venue for evening entertainments.

Quiet Space

If you need a break from all the hustle and bustle of the conference you can make your way to a space we have reserved just by off to the side of Rubix, marked on the map above.

Union Building

LEVEL
2



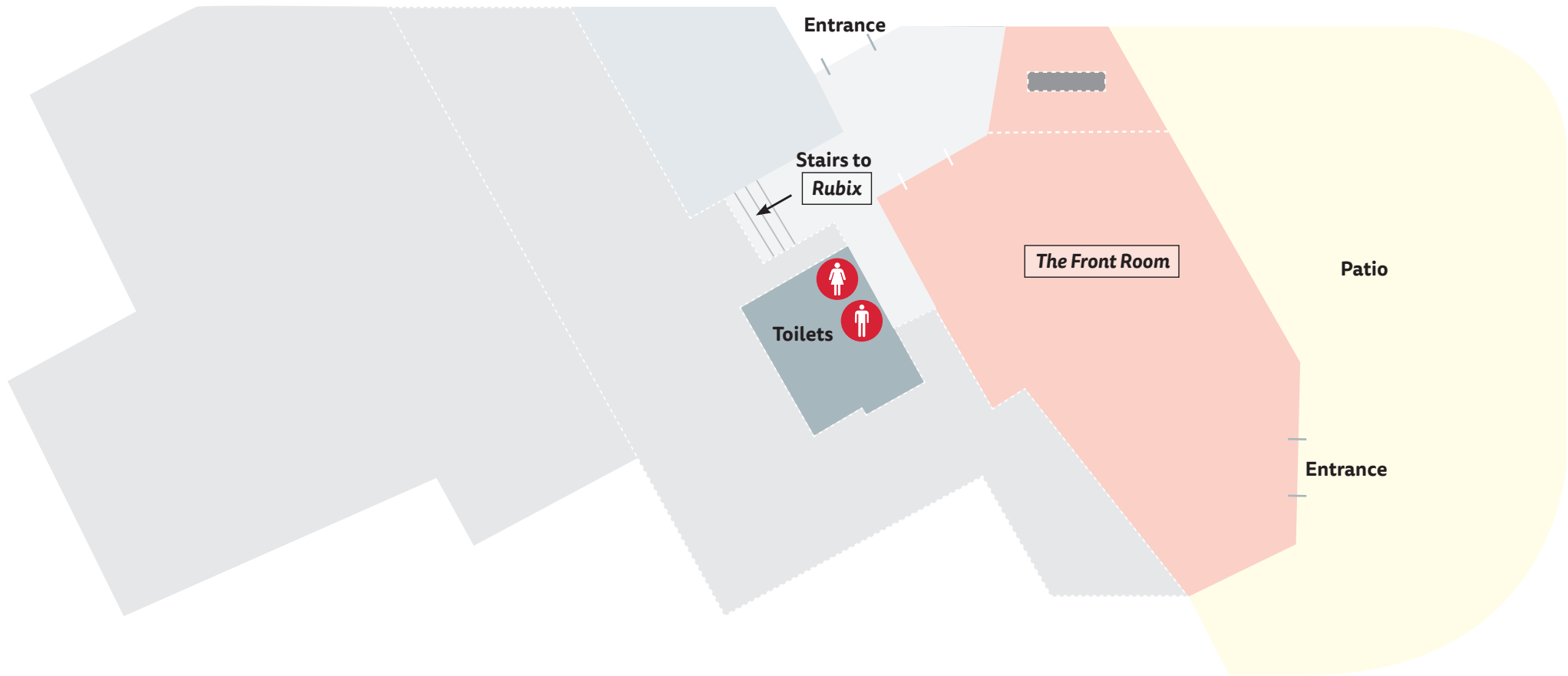
Accessibility Requirements

Our building is challenging for accessibility. If you need accessible routes to our different venue spaces please find someone in our blue t-shirts and we can show you the best way.



Help!

Our staff are around to help you with any queries or requests, just find someone in a blue t-shirt for assistance.



Fire safety and Evacuation

There are no planned fire alarms during the conference.

In case of a fire alarm please evacuate yourself through your nearest exit and make your way to outside Hillside Coffee leaving any personal belongings behind. See on the map on page 6.

Photography and Filming

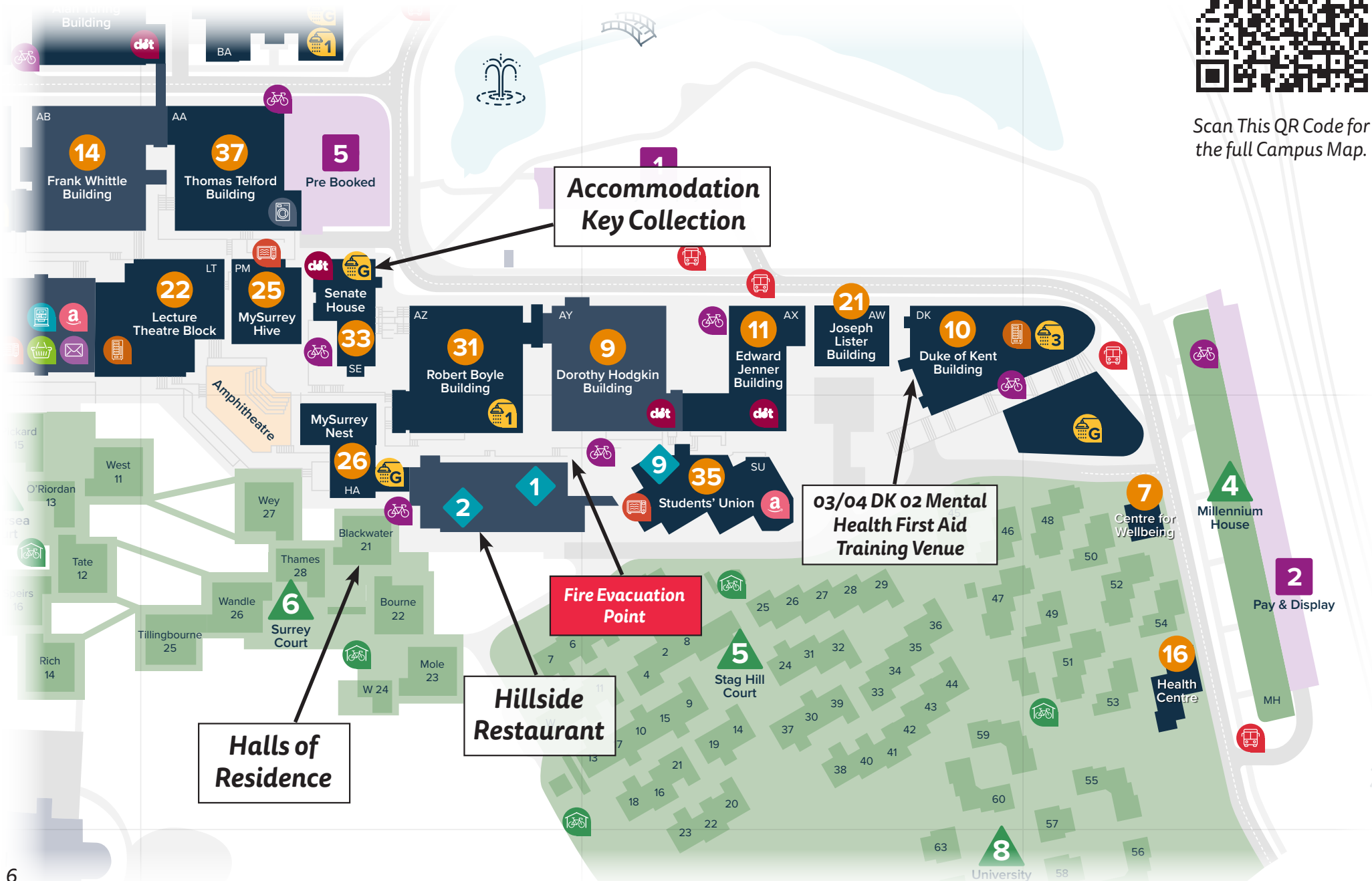
This conference will be photographed and/or filmed by Surrey Students' Union. By your presence at the conference you acknowledge that you may be photographed and/or filmed and as such grant permission to the Union to use photos and/or filmed footage. If you do not wish to be photographed, recorded, or appear under these conditions, you should let us know.

Campus Map

Key Campus Locations




Scan This QR Code for the full Campus Map.



Agenda - Day 1

Monday 19 August

	Development	Education	Communications & Strategy	Community Engagement & Wellbeing
12:00 - 13:00	Registration and Lunch - Union Building entrance			
13:00 - 13:45	Welcome and Opening Plenary - Welcome to the University of Surrey Alex McKee & Liam White - CEO & President, Surrey Students' Union and Emma Rowsell - Director of Student Life, University of Surrey <i>Rubix</i>			
14:00 - 15:00 SESSION 1	Chief Executives Networking <i>The Committee Room</i>	What does a Course Rep system look like in 2024/25? Herts SU Essex SU ARU SU <i>The Basement</i>	What's next for communication with students? (Who are they, what do they look like, how to they want to be contacted) Jo Walters - 25 Dots <i>The Front Room</i>	Mental Health First Aid Part 1 & 2 Sian Lovesey- Head of Advice - Lisa Rowe - Head of People Engagement and Development, Essex SU £15 03/04 DK 02
15:00 - 16:00 SESSION 2	Freedom of Speech - Your Responsibilities Peter Robertson - Charity Director, NUS <i>The Front Room</i>	The Future of the Night Time Economy Mike Kill - CEO, Night Time Industries Association and Jade Johnson - Community Manager, Surrey SU <i>Rubix</i>	 Scan this QR Code for the latest version of the agenda and session descriptions where available.	Student Nightline at Surrey Liam White - Union President Zoe Wilkes - Support Manager, Surrey SU <i>The Basement</i>

Development

Education

Communications & Strategy

Community Engagement & Wellbeing

16:00
- 17:30

Communities of Practice Networking - Hari's Bar
Check into Halls of Residence - Check in closes 18:00

17:30
- 19:00

Free time

19:00
- 20:00

Dinner - Rubix

20:00
-
23:00

Entertainment
Quiz

Rubix

Alcohol Free Entertainment
Board Games

The Front Room

Agenda - Day 2

Tuesday 20 August

09:30
- 10:00

Welcome to Day 2 - Surrey's Approach to Student Accommodation

Alex McKee - CEO, Surrey Students' Union and Alan Sutherland - Director of Campus Services, University of Surrey
Rubix

10:00
-
11:00

SESSION 3

GDPR - a practical application in SU's

Barbara Reynolds - Director of Finance and HR, Essex SU

Rubix

Strategies and resources SUs should implement to create and maintain a good community with their International and PGM students


Dan Ummu-Salamah - Development Officer, Portsmouth SU

The Basement

Immigration advice through the Students' Union

Sian Lovesey - Head of Advice, Essex SU

The Front Room

	Development	Education	Communications & Strategy	Community Engagement & Wellbeing
11:00 - 12:00 SESSION 4	Risk Assessments - Are Yours Suitable and Sufficient? James Lackovic - Head of Commercial Operations, Surrey SU <i>The Basement</i>	Ten regulatory levers to pull for students Jim Dickinson - Associate Editor, WonkHE <i>Rubix</i>	The Power of Personas: Unleashing our Student Data Joshua Smith - Insight Manager Southampton SU <i>The Front Room</i>	
12:00 - 13:00 SESSION 5	Unlocking new income generation potential through Media sales and Advertising Zaid Mahmood  <i>Rubix</i>		Social Media Content Strategy and incorporating student content Lambert Chan - Digital Content Creator, Chloe McKendrick - Marketing Executive, Herts SU <i>The Basement</i>	Medicinal Cannabis - Awareness for Students' Unions Hadley Keenan - Events Associate, Solent SU <i>The Front Room</i>
13:00 - 14:00	Lunch - Hillside Restaurant			
14:00 - 15:00	Plenary - Higher Education under a Labour Government Jim Dickinson - Associate Editor, WonkHE, Jo Holmes - VP Education, Essex SU, Kerry Matthews - Chief Student Officer, University of Surrey Facilitated by Kath Phillips - Head of People & Representation, Surrey SU <i>Rubix</i>			

	Development	Education	Communications & Strategy	Community Engagement & Wellbeing
<p>15:00 - 16:00</p> <p>SESSION 6</p>	<p>Yes, but what should I post on LinkedIn</p> <p>Jim Dickinson - Associate Editor, WonkHE</p> <p><i>Rubix</i></p>	<p>Re-evaluating Success: The Case for Uncapped Resits and Modernisation of Student Representation</p> <p>Marija Solic - Academic Representation Officer, Portsmouth SU</p> <p><i>The Basement</i></p>	<p>Using student data to direct the work of elected representatives 'The Big Plan'</p> <p>Craig Stephens - CEO, Lily-May Cameron - President, Essex SU</p> <p><i>The Front Room</i></p>	<p>Mental Health First Aid</p> <p>Part 3 & 4 Sian Lovesey- Head of Advice - Lisa Rowe - Head of People Engagement and Development, Essex SU</p> <p><i>03/04 DK 02</i></p>
<p>16:00 - 17:00</p> <p>SESSION 7</p>	<p>UK Employment Law Update</p> <p>Sarah Whitmore - Senior Partner, Warner Goodman</p> <p><i>Rubix</i></p>	<p>"Alexa, Run My Students' Union" Using AI to make your union smarter and more efficient</p> <p>Andy Morwood - Change Director, UCA SU</p> <p><i>The Basement</i></p>		<p>How we won the King's Award for Voluntary Service</p> <p>Keith Rowland - Director of Education, Activities and Support, Essex SU</p> <p><i>The Front Room</i></p>
<p>17:00 - 18:30</p>	Communities of Practice Networking - Hari's Bar			
<p>19:00 - 20:00</p>	Dinner - Rubix			
<p>20:00 - 23:00</p>				<p>If you've seen someone walking home one night with a 12 foot inflatable sausage, one shoe missing and a big smile on their face, you're probably not far from one of our shows.</p> <p>Our packed out nights are renowned for their full venue sing-alongs, confetti showers, huge prize giveaways and customer stage battles. Take the plunge. Grab your crew. And we'll see you on the dance floor.</p> <p>Want Bingo Lingo at your venue? Contact Rhys Hartley rhys@bingolingo.club</p>
	<p>Alcohol Free Entertainment Board Games <i>The Front Room</i></p>			

Agenda - Day 3

Wednesday 21 August

	Development	Education	Communications & Strategy	Community Engagement & Wellbeing
09:50	Welcome to Day 3 - Rubix			
10:00 - 11:00 SESSION 8		<p>Surrey's Approach to AI</p> <p>Dr Chris Trace - Head of Digital Learning, Surrey Institute of Education</p> <p><i>The Basement</i></p>	<p>Managing Projects in a Students' Union Environment</p> <p>John Valerkou - Chief Executive, ARU SU</p> <p><i>Rubix</i></p>	<p>Enhancing Campus Safety and Strengthening University Regulations</p> <p>Liam White - President, Jo Yau - President 2023/24, Zoe Wilkes - Support Manager, Surrey SU</p> <p><i>The Front Room</i></p>
11:00 - 12:00 SESSION 9	<p>Supporting Neurodivergent Staff</p> <p>Regina Zyrek - HR, Learning and Development Manager, Arts SU Sarah Jackson - Head of People and Development, Bucks SU</p> <p><i>The Front Room</i></p>			<p>Students for Sensible Drugs Policy</p> <p>Connor Sutherland - Welfare Officer, Portsmouth SU</p> <p><i>Rubix</i></p>
12:00 - 12:15	<p>Closing Plenary</p> <p>Liam White - Union President, Surrey Students' Union</p> <p><i>Rubix</i></p>			
12:15 -	Lunch and Departure - Rubix			

Communities of Practice

What are Communities of Practice?

Great question! One of the aims of Southern Unions is to ensure we are sharing best practice and meeting other staff members and officers in similar roles. We have setup a range of communities based on the various different areas of work that students' unions have. Members of the communities meet regularly, have a group chat and produce an annual report on their work and activity.

Can I join one and how do I do it?

During the Communities of Practice networking sessions, which are timetabled in the programme, the various communities will be holding informal networking sessions in spaces around Rubix and Hari's Bar. We'll supply them with a helpful sign for their table so you can find the community that you'd like to find out more about any possibly join.

Here are the communities!

- Student Activities
- Student Voice
- Comms
- Commercial
- Finance
- HR
- Insight
- Advice
- Deputy CEO
- Non-commercial events (new and emerging)
- Student Officers



We have a sole purpose to connect brands to students and support our SU partners with new forms of income generation that can further their core purpose.

Coming out of a students' union, We understand campus culture and we understand students. We know too well the issues facing higher education and students in the current climate. But we are here to act as an extension of your team to enable you to continue provide the best university experience for your students.

SU Network is a values lead student focused advertising agency.

We currently work with students' unions exclusively and non-exclusively to support their media sales and business development functions across the UK. If this is something that you'd like to explore further with us, please do reach out at hello@sunetwork.co.uk

We are continuously expanding and growing alongside our SU partners and want to help SUs achieve their fullest potential.

CREATE IMPRESSIONS THAT START GREAT RELATIONSHIPS

LARGE FORMAT

DESIGN, PRODUCTION AND INSTALLATION

- Banners
- Hoarding Graphics
- Posters
- Exhibition Systems
- Vehicle Wraps
- 3D Cut to shape box making
- Point of Sale
- Fully licensed fitting service
- Printing; wood, tiles, glass, pvc, perspex, plastics and much more!

SMALL FORMAT

CONCEPT, DESIGN AND PRODUCTION

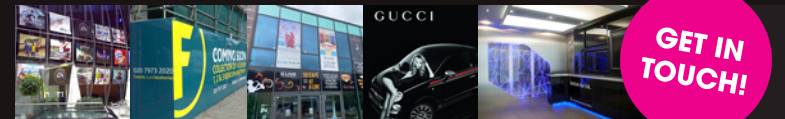
- Business Cards
- Letterheads
- Brochures
- Annual Reports
- Books
- Mailing + Fulfilment
- Programmes
- Leaflets and Flyers
- Variable Data
- Dedicated in-house creative design team



✉ steve@giddenplace.com

🌐 www.giddenplace.com

01483 30 30 40





**SURREY
STUDENTS'
UNION**

Union House, Stag Hill,
University of Surrey, Guildford,
Surrey GU2 7XH
surreyunion.org

